

TROILUS GOLD CORP. INTERSECTS 1.74 G/T AUEQ OVER 67 METRES EXTENDING Z87 180 METRES BELOW KNOWN RESOURCE

October 31, 2018, Toronto, Ontario – Troilus Gold Corp. (TSX: TLG) (“Troilus” or the “Company”) is pleased to provide further drilling results from its 100% owned Troilus gold and copper property located Northeast of the Val-d’Or district in Quebec, Canada (the “Troilus Project”). The 36,000 metre drill program was designed to confirm and expand existing mineral resources from the historically producing Troilus mine, as well as explore down dip and along strike from known mineralization.

Twelve (12) holes, at Z87, totaling approximately 9,100 metres of drilling were designed to upgrade inferred classified material to indicated, and to improve mineralized resolution below indicated mineral resource estimates down dip. Management believes success from this series of drill holes may create new inferred material below currently classified inferred resource estimates (Fig 1&3).

Three (3) holes, TLG-Z87-018, 035, and 044W, were targeted to test the down dip extension of mineralization below the current Z87 mineral resource estimates. All 3 holes successfully intersected gold and copper mineralization over expected widths and showed strong lithological continuity with the mineralized zones above. Continuation of mineralization has been extended an additional 180 metres below the lowest level of inferred categorized estimates and opened up opportunities directly to the North (Fig 2&4).

Highlights:

- **TLG-Z87-044W – 1.58 g/t gold and 0.1% Cu for 1.74 g/t AuEq over 67 metres, including 10.58 g/t AuEq over 2 metres, and 7.82 g/t AuEq over 6 metres**
- **TLG-Z87-017 – 2.61 g/t gold and 0.08% Cu for 2.74 g/t AuEq over 42m, including 42.49 g/t AuEq over 2m**
- **TLG-Z87-018 – 1.88 g/t gold and 0.1% Cu for 2.04 g/t AuEq over 52 metres, including 4.78 g/t AuEq over 8 metres**
and
1.26 g/t gold and 0.15% Cu for 1.5 g/t AuEq over 53 metres, including 3.44 g/t AuEq over 8 metres
- **TLG-Z87-035 – 1.44 g/t gold and 0.13% Cu for 1.65 g/t AuEq over 81 metres, including 9.1 g/t AuEq over 3 metres, and 3.71 g/t AuEq over 10 metres**

“We believe this drilling at Z87 may be the most significant to date” said Justin Reid, CEO of Troilus Gold Corp. “We have shown the extension of Z87 significantly below our current mineral resource estimates. We expect this to have a meaningful impact on our upcoming mineral resource estimate”

The 2018 drill program has completed at the Troilus Project. Ninety (90) diamond drill holes were completed for a total of 36,000 metres of drilling and 26,800 samples. A large backlog in the labs has been cleared and Troilus expects to deliver the bulk of our remaining Z87, J4 and J5 results to the market over the next few weeks.

An updated mineral resource estimate is currently underway and is planned to be released before the end of 2018. A targeted regional exploration program has been established in conjunction with drilling results and the planned resource. Regional exploration is focusing on the extension and identification of mineralization to the Northeast and Southwest of the existing resource. Structural and geophysical studies are being combined with regional mapping to outline potential drill targets to be included within our 2019 exploration drill program.

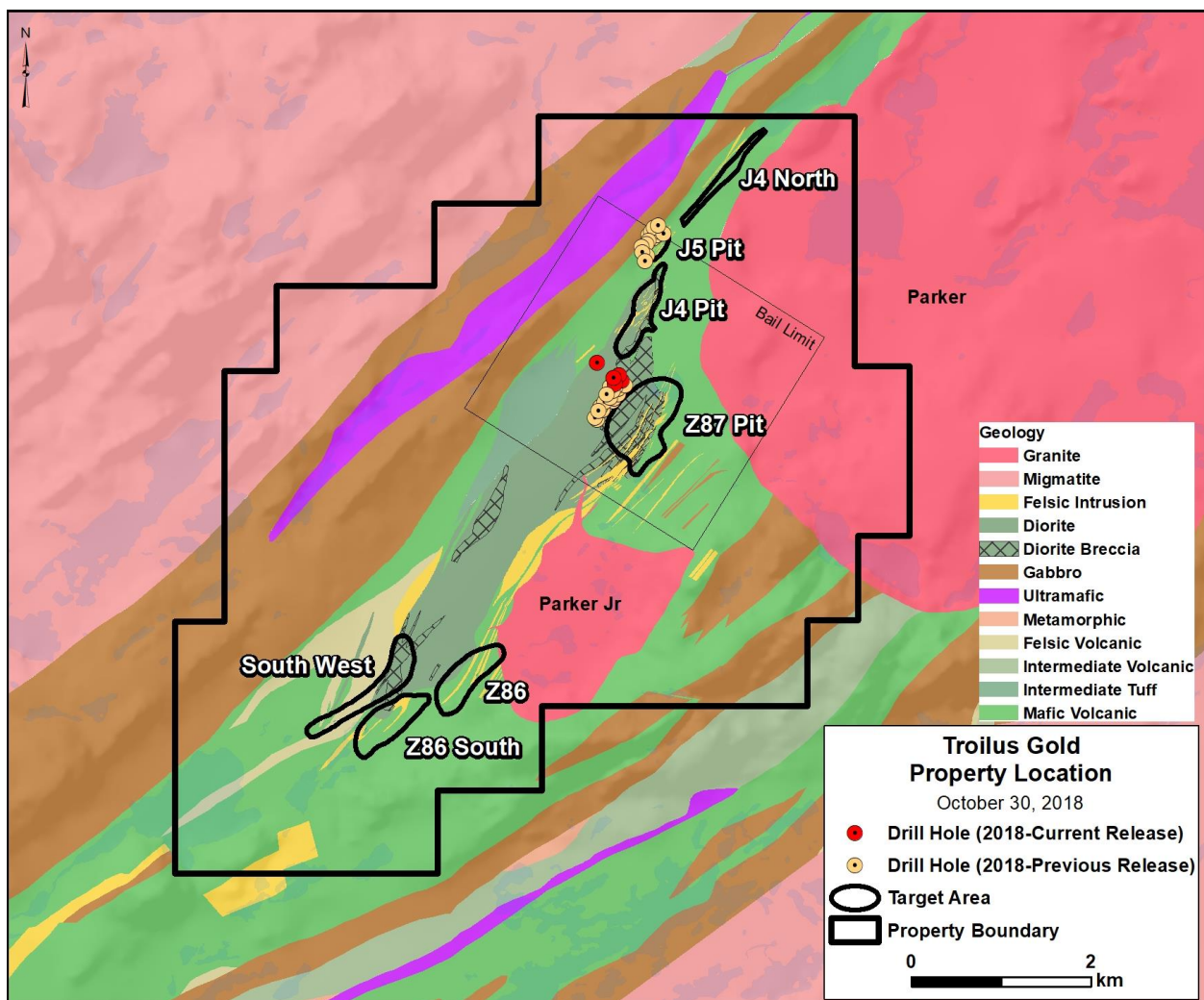


Figure 1: Geologic plan map showing location of main target across TLG land package

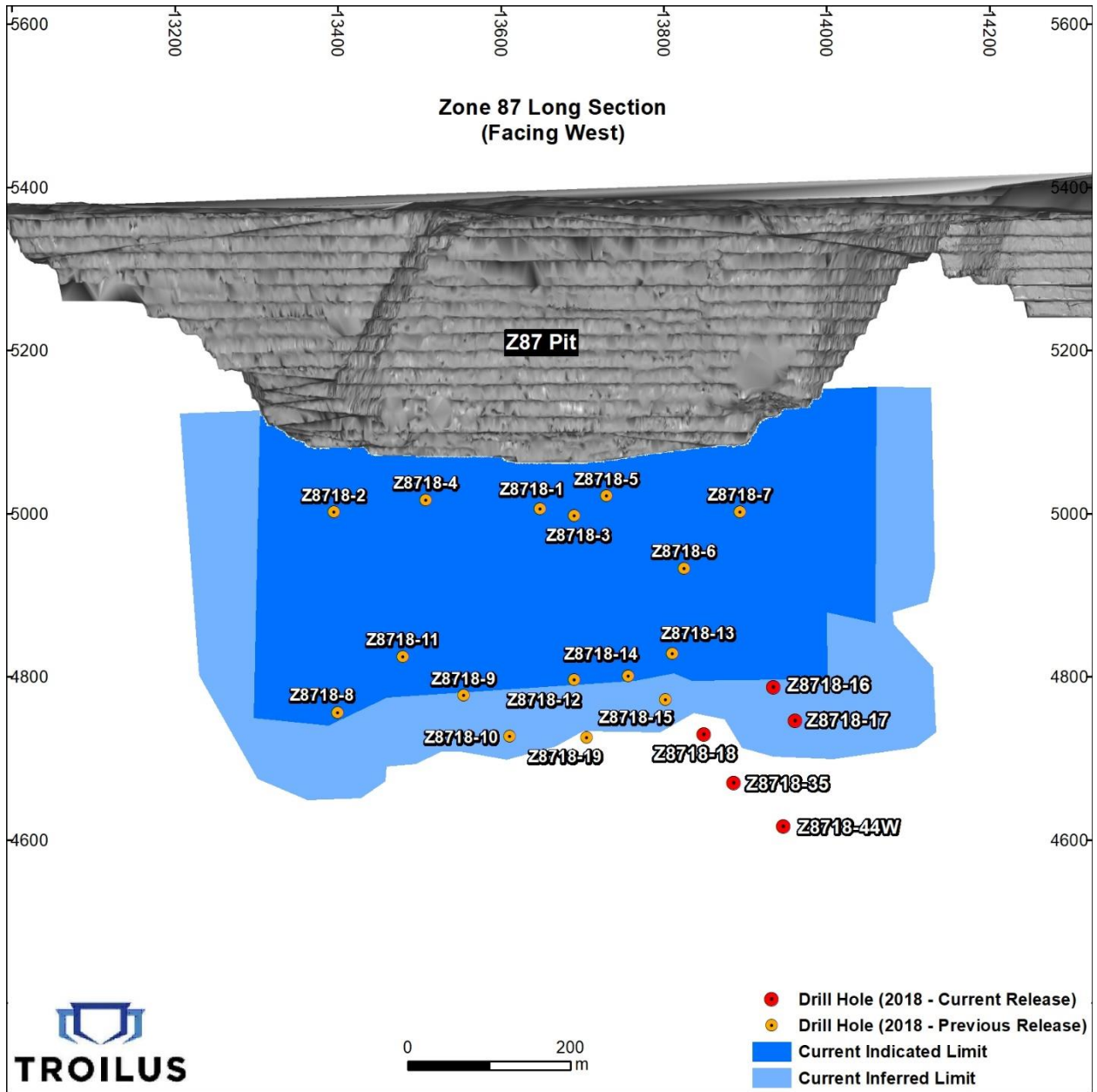


Figure 2: Longitudinal section showing drill hole pierce points

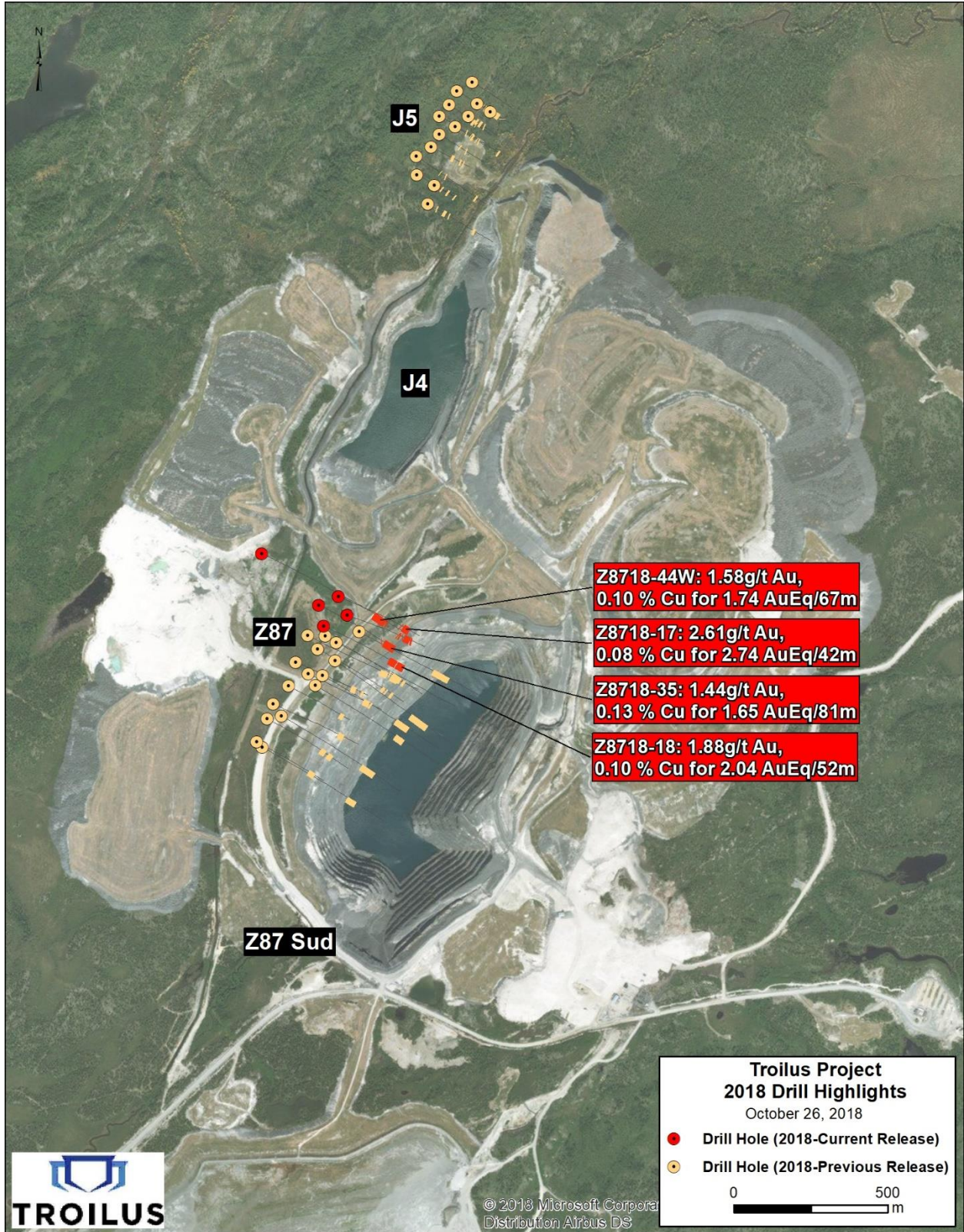


Figure 3: Property plan map showing location of significant drill results

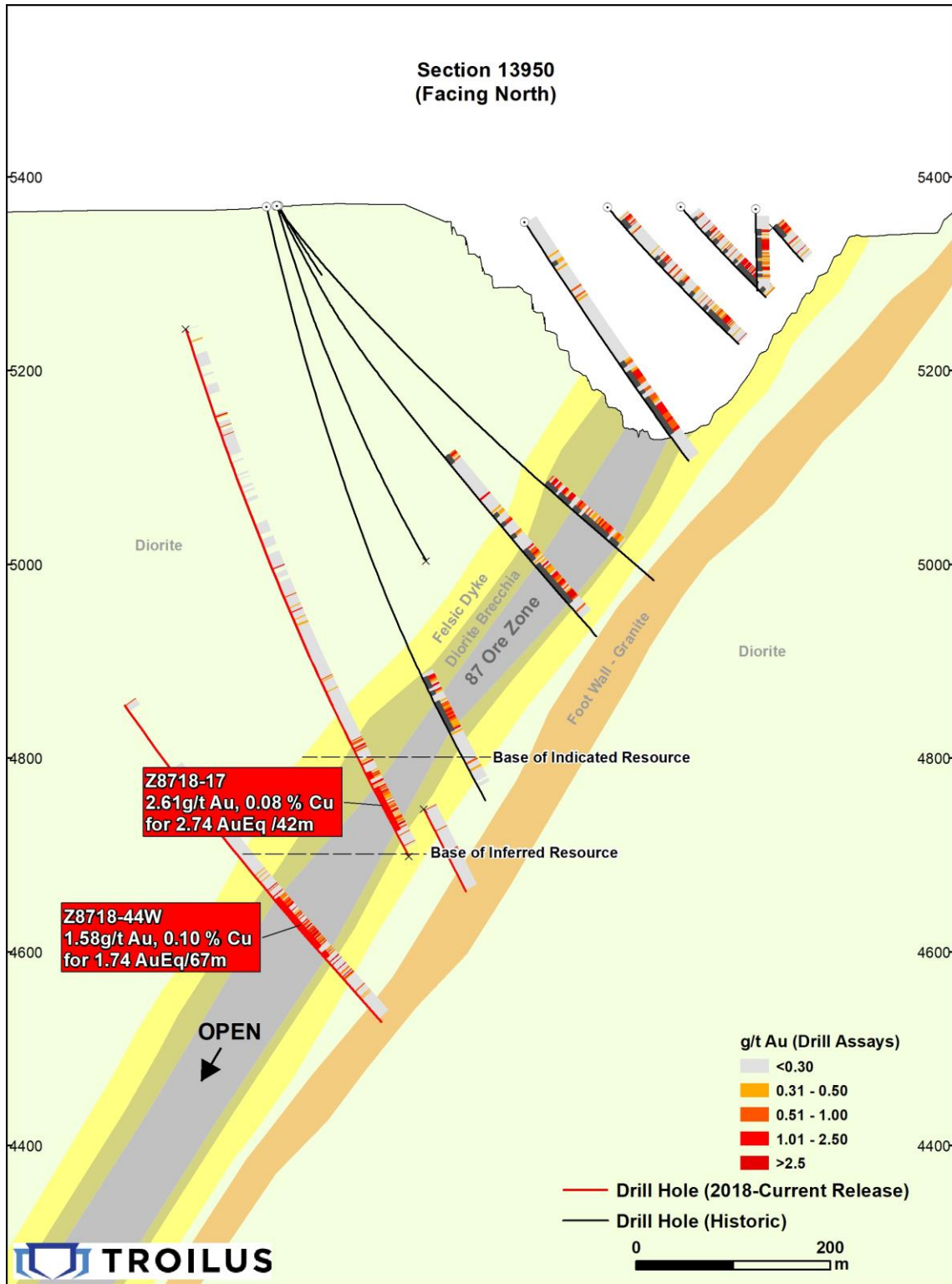


Figure 4: Cross Section showing drill results and typical geology of Z87 at Troilus Gold Project

Z87

	From	To	Length	Au	Cu	AuEq
TLG-Z8718-016	540	546	6	0.76	0.32	1.27
and	552	558	6	1.82	0.17	2.09
incl	554	555	1	8.51	0.25	8.9
and	579	584	5	0.68	0.06	0.77
and	593	636	43	0.88	0.10	1.04
incl	593	595	2	2.89	0.29	3.35
incl	620	624	4	1.86	0.06	1.95
and	643	654	11	0.55	0.12	0.74
TLG-Z8718-017	625	632	7	0.61	0.09	0.75
and	643	685	42	2.61	0.08	2.74
incl	671	673	2	42.30	0.12	42.49
and	686	692	6	1.34	0.03	1.39
incl	686	688	2	3.02	0.02	3.04
TLG-Z8718-018	619	672	53	1.26	0.15	1.5
incl	621	624	3	2.46	0.43	3.14
incl	639	647	8	2.75	0.44	3.44
incl	670	671	1	3.37	0.07	3.48
and	675	727	52	1.88	0.10	2.04
incl	684	692	8	4.49	0.18	4.78
incl	700	712	12	3.11	0.10	3.27
TLG-Z8718-035	670	674	4	0.84	0.02	0.87
and	689	770	81	1.44	0.13	1.65
incl	707	710	3	8.25	0.54	9.10
incl	751	753	2	2.77	0.37	3.36
incl	755	765	10	3.23	0.30	3.71
incl	767	769	2	2.91	0.04	2.98
and	775	793	18	0.81	0.03	0.86
TLG-Z8718-044W	832	899	67	1.58	0.10	1.74
incl	874	876	2	10.03	0.35	10.58
incl	881	887	6	7.54	0.17	7.82
and	905	912	7	0.66	0.06	0.75

*Metal grades uncut

**AuEq based on \$1300/oz Au, \$3/lb Cu and 100% recovery. Au g/t + (Cu g/t * Cu price (g)) / Au price (g)

36,000 Metre 2018 Drill Program

Overview:

- 1) **Zone 87 (Z87):** Expand defined underground estimated mineral resource down dip and along strike below the historic producing Z87 open pit.
- 2) **Zone J4 (J4) & Zone J5 (J5):** Expand estimated mineral resource below historic producing J4 and J5 open pits to show potential near surface mineralization.
- 3) **Southwest Zone:** Based on historic drilling success, initiate near surface exploration 3.5 kilometre Southwest of Z87 open pit along the Troilus Diorite boundary (Figure 2)

1) Z87:

From 1996 to 2010, Z87 produced the majority of the over 2 million ounces of gold and 70,000 tonnes of copper produced at the Troilus Project. The Z87 pit was ultimately 350 metres deep and had a strike of approximately 900 metres. The Z87 zone is the focus of the current underground estimated mineral resource, representing over 1.6 million ounces of indicated and 360,000 ounces of inferred material (Figure 5).

	Zone	Tonnage (Mt)	Au (g/t)	Cu (%)	AuEq (g/t)	Contained Gold (000 oz)	Contained Copper (Mlb)	Contained AuEq (000 oz)
Indicated	87	29.6	1.48	0.157	1.72	1,403	102.2	1,635
	J4	-	-	-	-	-	-	-
	J5	-	-	-	-	-	-	-
Total Indicated		29.6	1.48	0.157	1.72	1,403	102.2	1,635
Inferred	87	7.9	1.19	0.138	1.41	305	24.2	360
	J4	4.4	1.15	0.040	1.21	163	3.9	172
	J5	0.3	0.98	0.045	1.05	10	0.3	11
Total Interred		12.6	1.18	0.102	1.33	478	28.4	543

Notes:

1. CIM definitions were followed for Mineral Resources.
2. Mineral Resources were estimated at a cut-off grade of 0.8 g/t Au.
3. Mineral Resources were estimated using long-term metal prices of US\$1,500 per ounce gold and US\$3.50 per pound copper; and an exchange rate of US\$1.00 = C\$1.1.
4. $AuEq = (34.59 \times Au \text{ grade} + 54.02 \times Cu \text{ grade}) / 34.59$.
5. A recovery of 83% was used for gold and 92% for copper.
6. Numbers may not add due to rounding.
7. Mineral Resources which are not Mineral Reserves do not have demonstrated economic viability. The estimate of Mineral Resources may be materially affected by environmental, permitting, legal, title, taxation, sociopolitical, marketing, or other relevant issues.
8. Drilling has been done to intercept mineralized zone at true width. The difference between true and drill width is too small to impact intervals stated.

Figure 5: Troilus Estimated Underground Resource

Mineralization at the Troilus Project is hosted in breccias and amphibolite grade metamorphic rocks within a much broader, 4.5 kilometre by 400 metre, metamorphosed diorite, known as the Troilus Diorite. Fine-grained disseminated gold accounts for approximately 90% of mineralization at Troilus, primarily as native gold and electrum with grains as large as 20 microns. Chalcopyrite, Pyrite, and Pyrrhotite are broadly disseminated throughout the mineralized zone, which are rarely associated with gold (<1-3%). Vein-hosted gold accounts for approximately 10% of mineralization which are responsible for high grade intercepts (>50gpt over 1 m) at Troilus.

The broad geology and style of mineralization at Z87 creates a large deposit area, nearly 1 kilometre along strike and 30-50 metres wide, which remains open both along strike and down dip. The 2018 Winter/ Spring drill program at Z87 is designed to:

- Expand and infill certain areas of Troilus' existing underground estimated mineral resource;
- Convert and upgrade inferred material along the flanks and down dip extension of underground estimated mineral resources to an indicated category; and
- Expand down dip estimated mineral resources and show potential for further expansion through focused infill and step out drilling.

2) J4 & J5:

J4 and J5, two smaller scale historic open pits located 200 metres and 1kilometres directly Northeast of Z87 are characterized by the same mineralization and geology as Z87; both remaining open at depth and along strike.

Management believes the inherited Troilus database suggests the potential for additional near surface mineralization at J4 and J5 and potentially signifies open pittable resource opportunities. The objective of the Winter/ Spring drill campaign, at J4 and J5, is to expand the open pit and underground estimated mineral resource below these lesser historic pits, with the intent of recognizing material that could contribute to an early production scenario.

3) Southwest Zone

The Southwest Zone is located along the margin of the Troilus Diorite and surrounding volcanics, 3.5 kilometres Southwest of Z87 (Figure 5). Historically this area exhibited significant mineralization from drilling including intercepts as high as 36m @ 1.23g/t Au, and 18m @ 1.06g/t Au. Historic drilling in this area is limited, leaving the opportunity to explore, and potentially outline new mineralization at surface.

The Southwest Zone exemplifies near term, blue sky opportunity at Troilus, and will be the initial focus of a significant, property wide exploration program. The Troilus Diorite remains underexplored and highly prospective.

Quality Control

During the Zone 87 drill program, one metre assay samples are taken from NQ core and sawed in half. One-half is sent for assaying at AGAT Laboratory, a certified commercial laboratory, and the other half is retained for results, cross checks, and future reference. A strict QA/QC program is applied to all samples; which include insertion of one certified mineralized standard and one blank sample in each batch of 25 samples. The gold analyses were by fire-assay on 50 grams of pulp with an atomic absorption finish. Repeats were carried out by fire-assay with a gravimetric finish on each sample containing 3.5 g/t Au or more.

About Troilus Gold Corp.

Troilus is a Toronto-based, Quebec focused, advanced stage exploration and early-development company focused on the mineral expansion and potential mine re-start of the former gold and copper Troilus mine. The 4,700-hectare Troilus property is located northeast of the Val-d'Or district, within the Frotêt-Evans Greenstone Belt in Quebec, Canada. From 1997 to 2010, Inmet Mining Corporation operated the Troilus project as an open-pit mine, producing more than 2,000,000 ounces of gold and nearly 70,000 tonnes of copper.

Qualified Person

The technical and scientific information in this press release has been reviewed and approved by Bruno Perron, P.Eng., Senior Technical Manager, who is a Qualified Person as defined by National Instrument 43-101. Mr. Perron is an employee of Troilus and is not independent of the Company under National Instrument 43-101

For more information:

Spyros Karellas
Communications Manager
+1 (416) 433-5696
skarellas@troilusgold.com

Cautionary statements

Mineral Resources are not Mineral Reserves and do not have demonstrated economic viability. There is no certainty that all or any part of Mineral Resources will be converted to Mineral Reserves. Inferred Mineral Resources have a lower level of confidence that that applied to an Indicated Mineral Resource and must not be converted to a Mineral Reserve. Quantity and grades are estimates and are rounded to reflect the fact that the Mineral Resource Estimate is an approximation. For more information with respect to the key assumptions, parameters and risks associated with the mineral resource estimates discussed herein, see the Company's technical report entitled "Technical Report on the Troilus Gold Copper Mine Mineral Resource Estimate, Quebec, Canada" dated November 20, 2017 (the "Technical Report") available under the Company's profile at www.sedar.com.

This press release contains "forward-looking information" within the meaning of applicable Canadian securities legislation. Forward-looking information includes, but is not limited to, statements regarding , the impact of drill results and mineral resources estimate on the Company, the projected economics of the project, and the Company's understanding of the project; statements with respect to the development potential and timetable of the project; the estimation of mineral resources; realization of mineral resource estimates; the timing and amount of estimated future exploration; costs of future activities; capital and operating expenditures; success of exploration activities; government regulation of mining operations; and environmental risks and the receipt of any required regulatory approvals. Generally, forward-looking information can be identified by the use of forward-looking terminology such as "plans", "expects" or "does not expect", "is expected", "budget", "scheduled", "estimates", "forecasts", "intends", "anticipates" or "does not anticipate", or "believes", or variations of such words and phrases or statements that certain actions, events or results "may", "could", "would", "might" or "will be taken", "occur" or "be achieved". Forward-looking information is subject to known and unknown risks, uncertainties and other factors that may cause the actual results, level of activity, performance or achievements of Troilus to be materially different from those expressed or implied by such forward-looking information, including but not limited to: there being no assurance that the exploration program will result in expanded mineral resources; ;risks and uncertainties inherent to mineral resource estimates; receipt of necessary approvals; general business, economic, competitive, political and social uncertainties; future prices of mineral prices; accidents, labour disputes and shortages; environmental and other risks of the mining industry, including without limitation, risks and uncertainties discussed in the Technical Report and other continuous disclosure documents of the Company available under the Company's profile at www.sedar.com . Although Troilus has attempted to identify important factors that could cause actual results to differ materially from those contained in forward-looking information, there may be other factors that cause results not to be as anticipated, estimated or intended. There can be no assurance that such information will prove to be accurate, as actual results and future events could differ materially from those anticipated in such statements. Accordingly, readers should not place undue reliance on forward-looking information. Pitchblack and Troilus do not undertake to update any forward-looking information, except in accordance with applicable securities laws.

Neither TSX Venture Exchange nor its Regulation Services Provider (as that term is defined in the policies of the TSX Venture Exchange) accepts responsibility for the adequacy or accuracy of this release.